



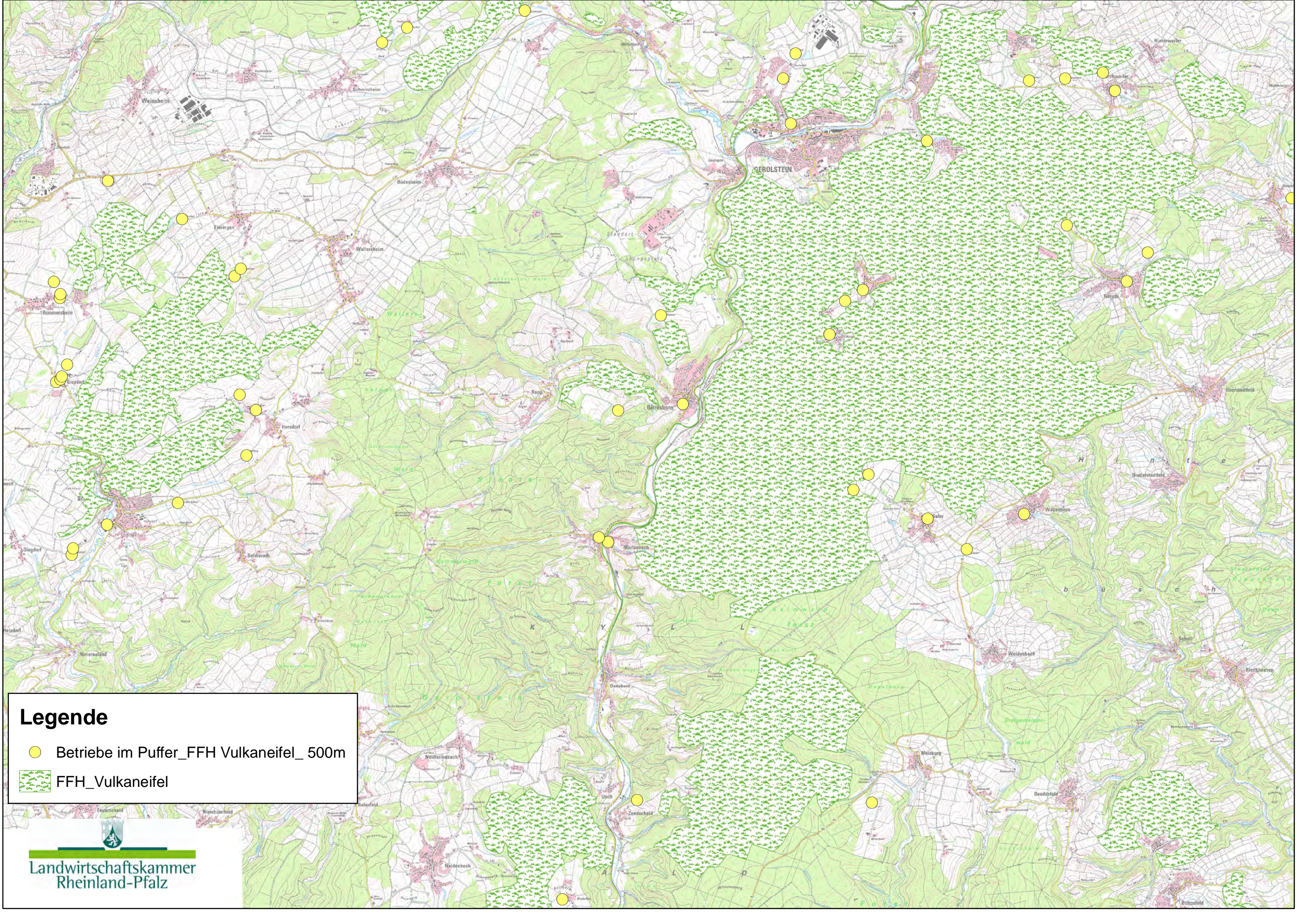




**Legende**

	< 30
	30 - 45
	> 45
	FFH_Vulkaneifel



### Legende

-  Betriebe im Puffer\_FFH Vulkaneifel\_500m
-  FFH\_Vulkaneifel

Rommersheim



Giesdorf





Oberlauch

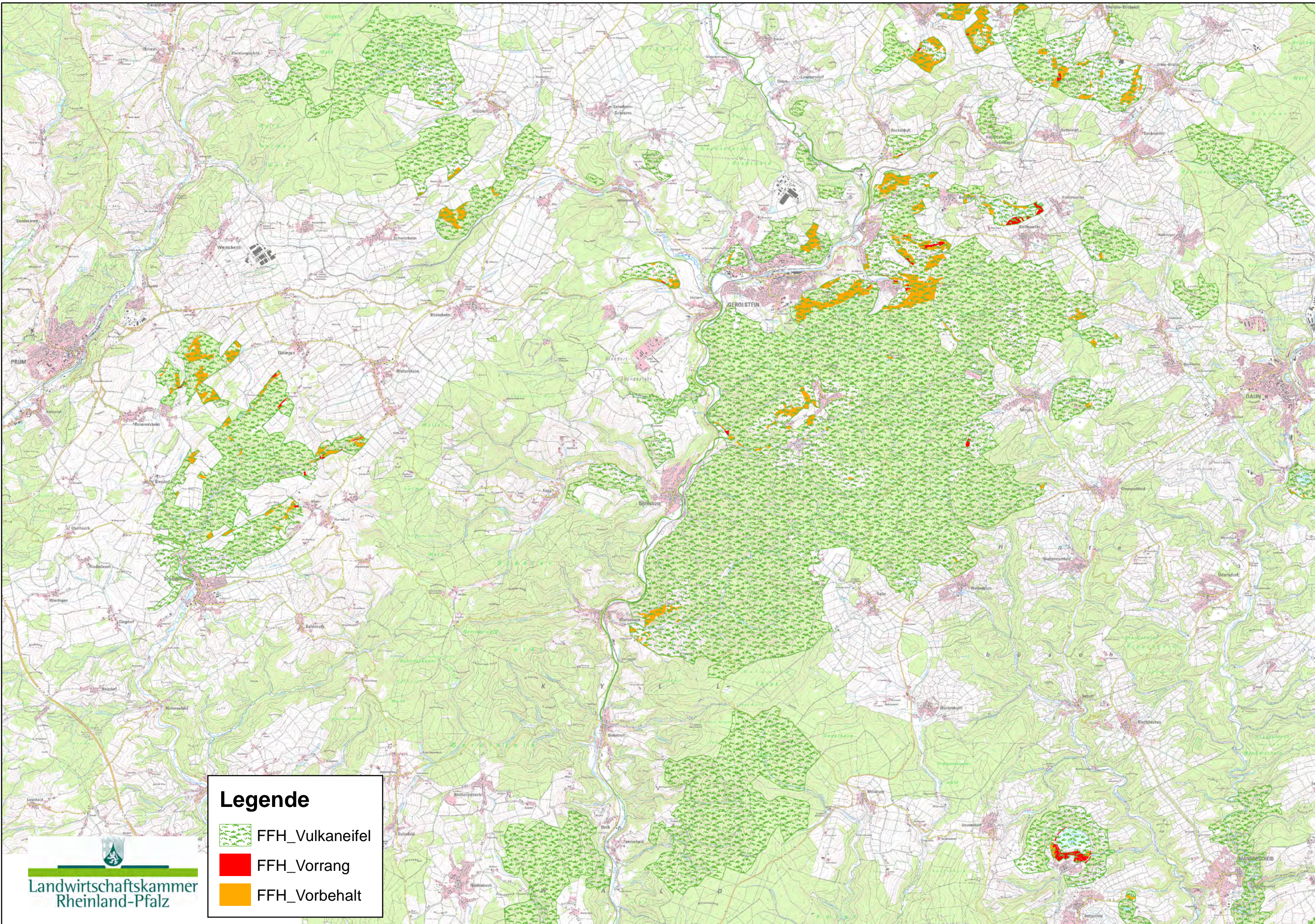


Manderscheid


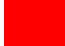



**Legende**

-  Biogasanlagen\_FFH Vulkaneifel\_Puffer 1000m
-  FFH\_Vulkaneifel



**Legende**

-  FFH\_Vulkaneifel
-  FFH\_Vorrang
-  FFH\_Vorbehalt



## Statistische Auswertung landwirtschaftlicher Strukturen im FFH-Gebiet Vulkaneifel

### 1. Betriebliche Ausstattung

	Anzahl	Kommentar
Betriebe in einem 500m-Puffer um FFH-Gebiet	163	Meist Milchvieh und Bullenmast
Biogasanlagen in 1000m-Puffer um FFH-Gebiet	7	davon 2 gewerbliche Anlagen > 500 KW

### 2. Flächenanalyse

Bodenzahlen landwirtschaftlicher Flächen im FFH-Gebiet	ha	In % der FFH-Gebietsfläche
<= 29	1.150	7%
> 29 <= 45	1.872	12%
> 45	306	2%

Vorrang- und Vorbehaltsflächen ( Stand: Entwurf RROP Trier, 2011)	ha	In % der FFH-Gebietsfläche
Gemeldete Vorbehaltsgebiete	3.075	19%
Gemeldete Vorranggebiete	2.159	14%